

Green Infrastructure:
Planning –
An Ecosystem Services
based approach



The environment can wait

Why?

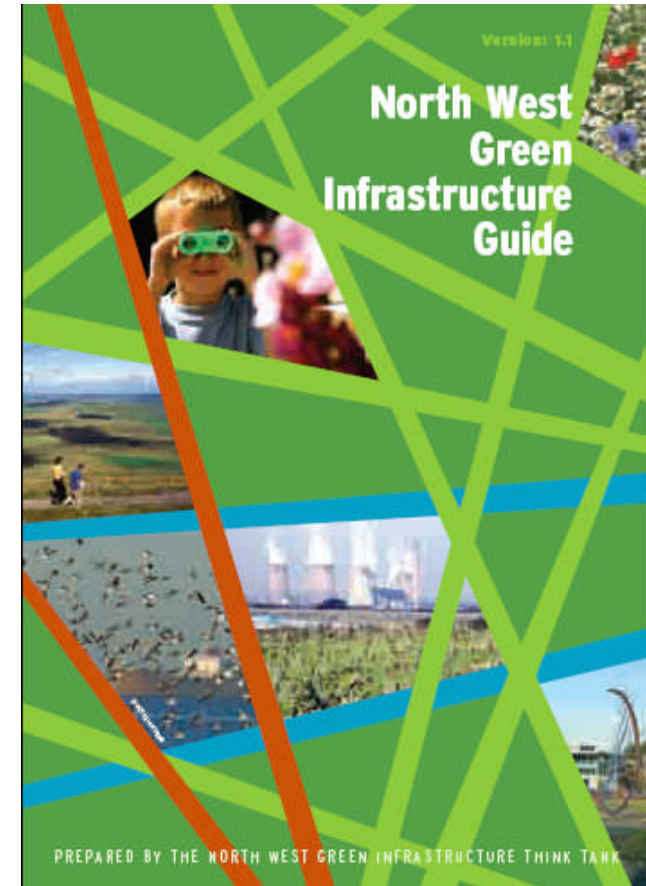
- Not understood
- Don't value
- "Not my job"

Task

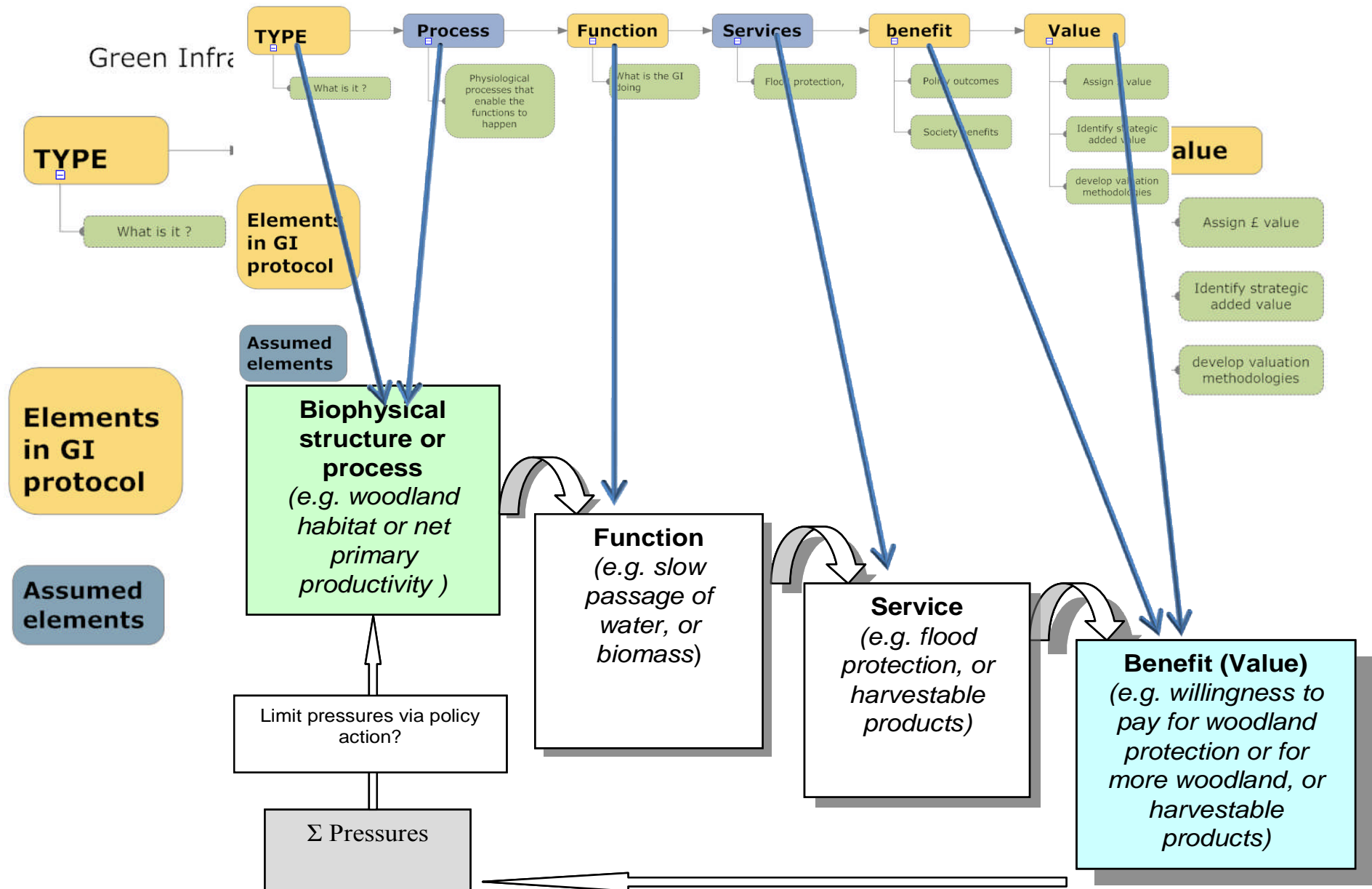
- Communicate
- Cooperate
- Influence
 - Show value
 - Identify benefit

Green Infrastructure

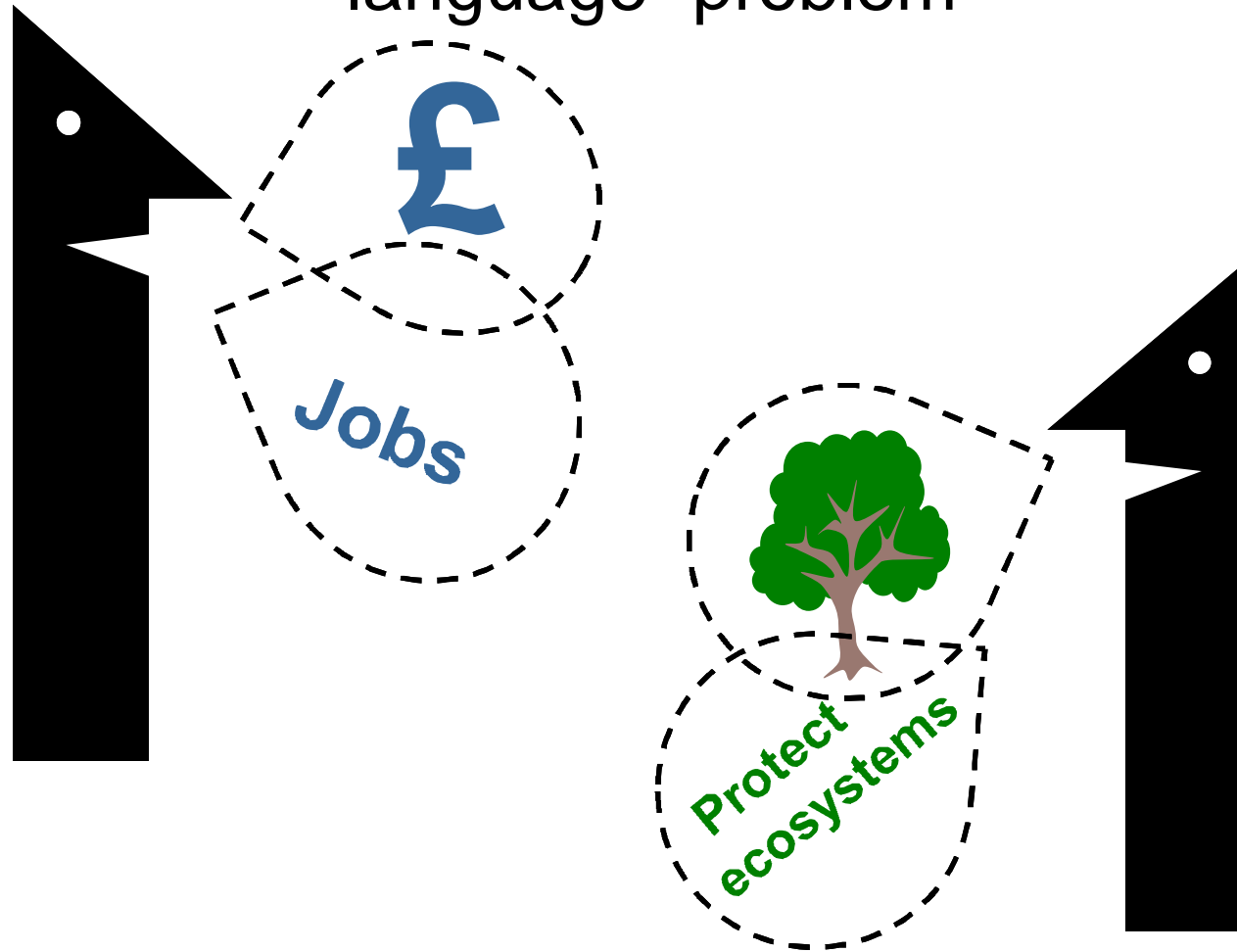
Our life support system –
The network of natural
environmental components
and green and blue spaces
which provides multiple social,
economic and environmental
benefits.

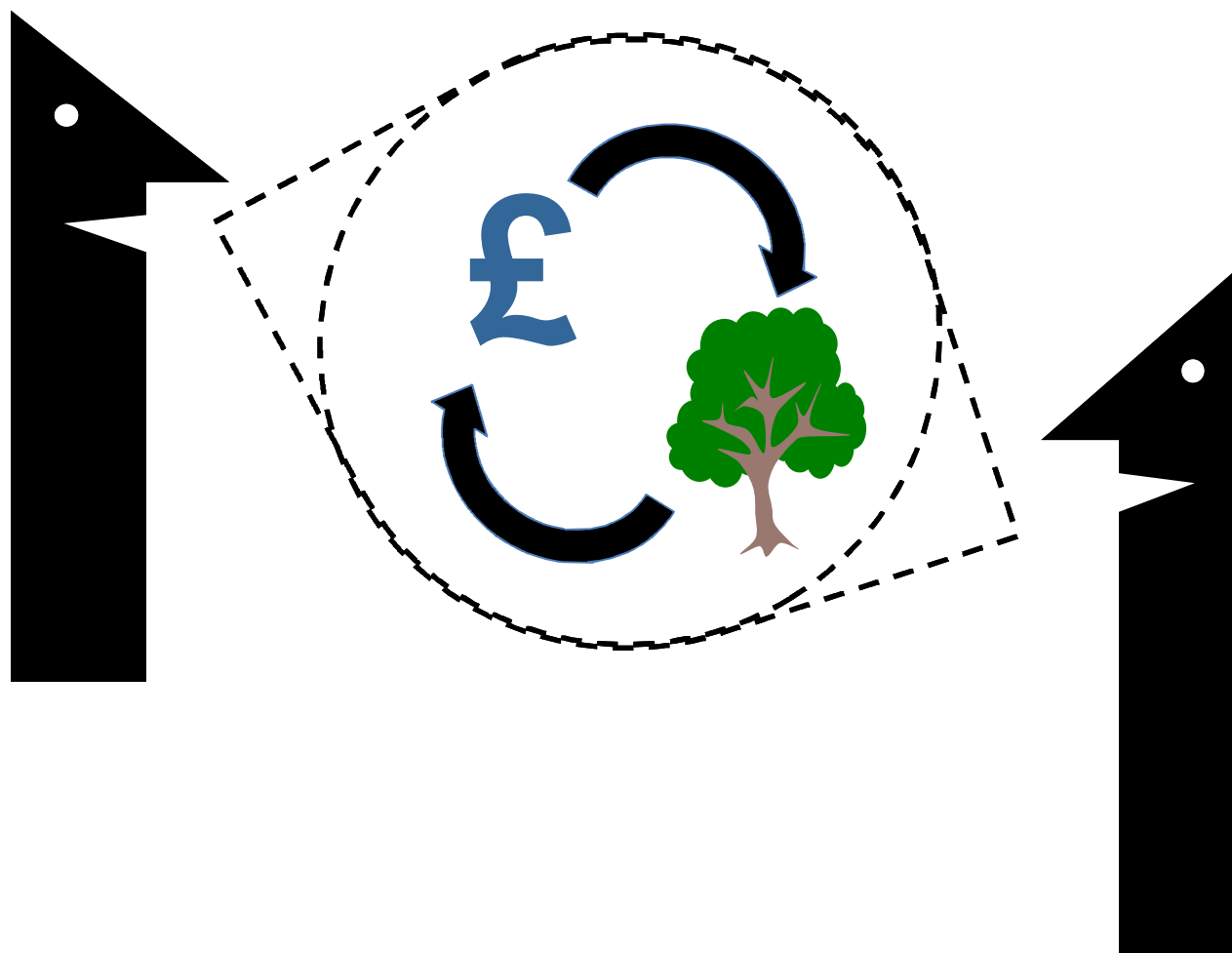


Green Infrastructure Planning



Environmentalists V Economic Development: partly a “language” problem



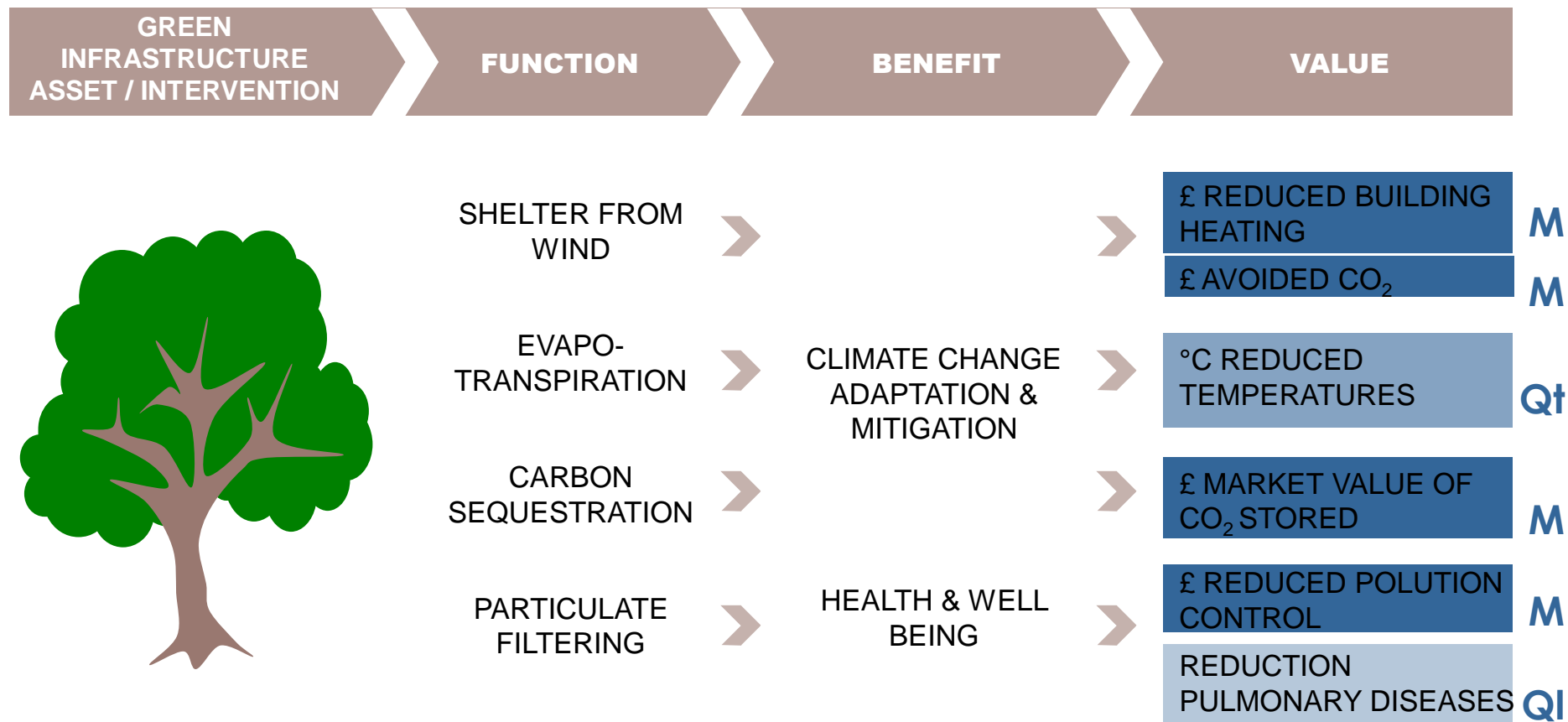




Building natural value for sustainable economic development

The green infrastructure valuation toolkit user guide





In **monetary** terms

M

In **quantitative** terms

Qt

In **qualitative** terms

QI

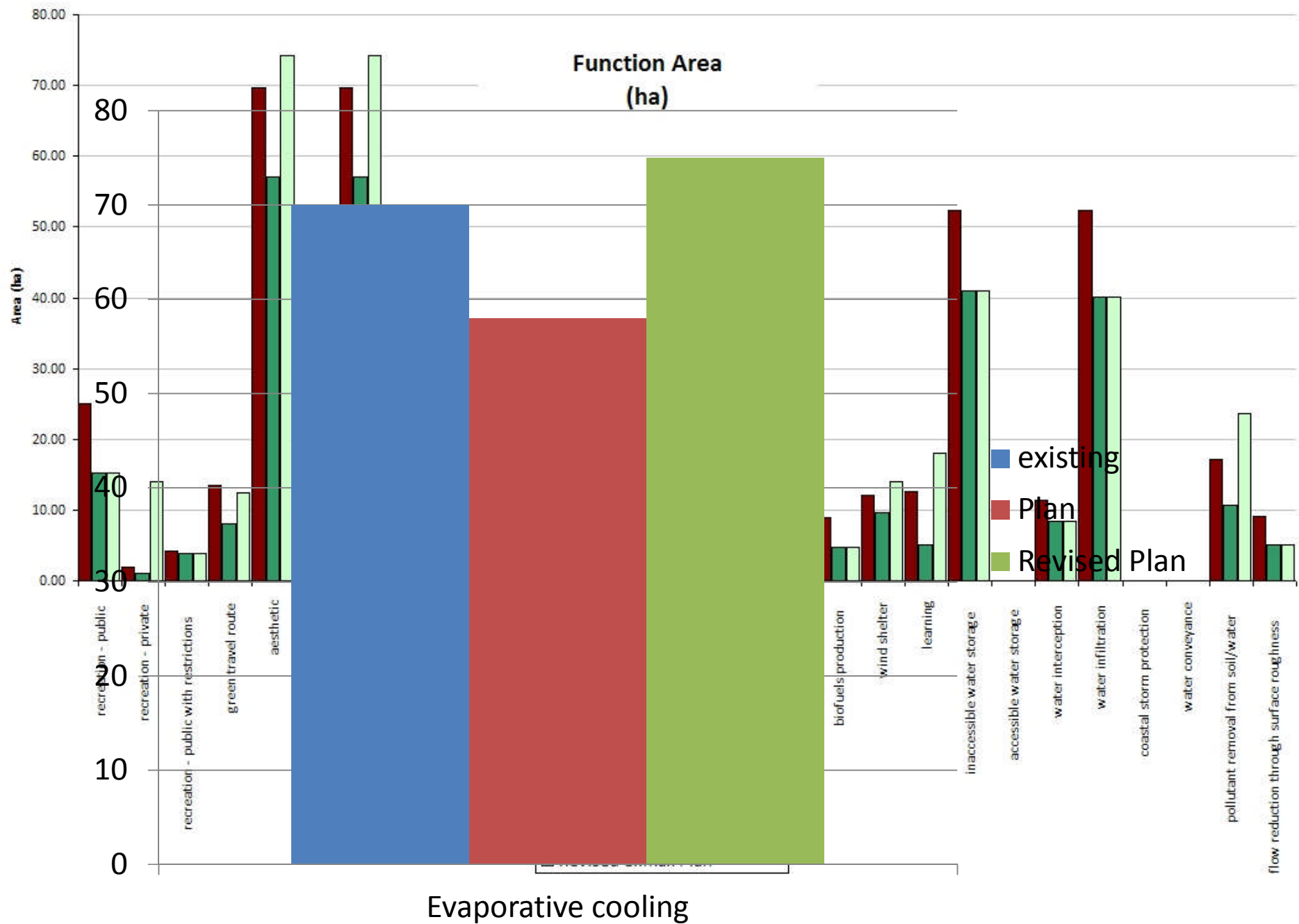
Liverpool Knowledge Quarter



£600 m of
investment

15% of
Liverpool's
GVA

MASTERPLAN



Net Value

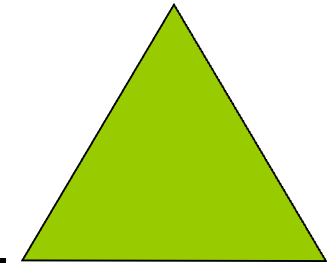
- Cost = £10m
- “An estimate of in excess of £30m of net benefits is made, though this is likely to form a lower bound, given that not all benefits are measured. In other words, the cost:benefit ratio is of the order 1:3, but likely to be higher.”

Every £1 invested in the Programme will it is estimated generate over the lifetime of the investment:

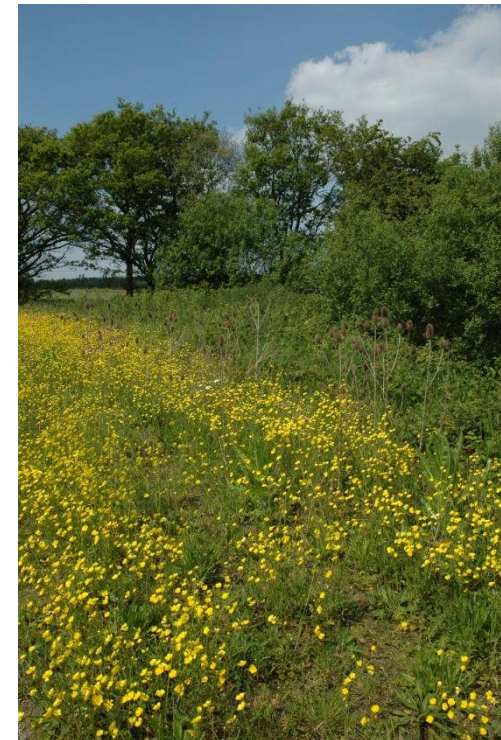
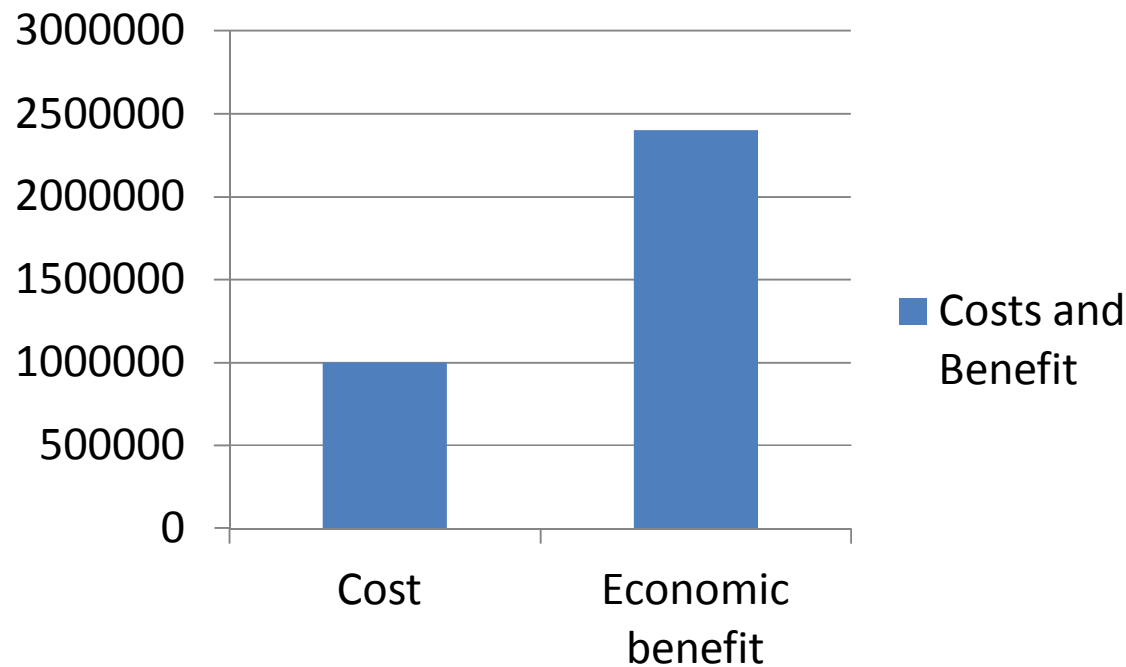
- £2.30 in increased GVA and £3.00 in increased GVA and social cost savings
- £10.20 in increased GVA, social cost savings and other non-market well being benefits.



Stanley Bank Triangle Project



Costs and Benefit



Supported by
The National Lottery[®]
through the Heritage Lottery Fund



**Heritage
Lottery Fund**

LIVERPOOL

GREEN INFRASTRUCTURE STRATEGY

ACTION PLAN

VERSION 1.0



Getting off the soapbox!

- “The environment can’t wait”
- Language
- Need for collective effort
- Show value
 - Enable practitioners
 - Get involved in the discussion



A photograph of a forest path with large trees and green foliage. The path is paved and leads into the distance, flanked by tall trees with dense green leaves. The ground is covered with fallen brown leaves. The text "Thank You" is overlaid in large white letters at the top.

Thank You

Paul Nolan
Director

The Mersey Forest

paulnolan@merseyforest.org.uk

www.merseyforest.org.uk